



Multiple Application Platform Server

MAPS 6.4 Release Guide

Product version 6.4

Last updated 12/12/2019

Trademark, Publishing Statement, and Copyright Notice

© 1998-2019 Evisions, Inc. All rights reserved.

This software and related documentation are provided under a license agreement containing restrictions on use and disclosure and are protected by intellectual property laws. No part of this document may be reproduced, stored in or introduced into a retrieval system, or transmitted in any form or by any means (electronic, mechanical, photocopying, recording, or otherwise), or for any purpose, without the express written permission of Evisions, Inc.

The information contained herein is subject to change without notice and is not warranted to be error-free. Product features referenced herein for a period of time may not match product contents. Evisions, Inc. does not warrant that the functions contained in the software will meet your requirements or that the operation of the software will be uninterrupted or error free. Evisions, Inc. reserves the right to make changes and/or improvements in the software without notice at any time.

This software and documentation may provide access to or information on content, products, and services from third parties. Evisions, Inc. and its affiliates are not responsible for and expressly disclaim all warranties of any kind with respect to third-party content, products, and services. Evisions, Inc. and its affiliates will not be responsible for any loss, costs, or damages incurred due to your access to or use of third-party content, products, or services. Evisions, Inc. does not endorse the content or developer of any products or web sites mentioned.

All information in this guide is designed for instructional purposes only. Evisions, Inc. makes no guarantees regarding the accuracy or performance of any techniques used in this guide. Software configurations and environments may vary, and some techniques used in this guide may not operate efficiently under all configurations. This guide may contain examples of various technologies or products, which are the sole property and responsibility of their creators.

Trademarks are the property of the respective owners for any products mentioned herein.

Table of Contents

What's New in MAPS 6.4?	4
MAPS Updates	4
Product versions	4
Installation	4
1. Prepare test environment and ensure current backup	4
2. Check for updates	4
3. Allow update process to complete	5
4. Verify the latest version is installed	5
MAPS 6.4 Release Notes	6
Getting Help	7

What's New in MAPS 6.4?

Evisions is pleased to announce the release of MAPS version 6.4, which includes the following changes:

- Numerous enhancements to support accessibility and assistive technology.
- Improvements to the CAS logout process for SSO.
- Support for AD FS authentication for SAML SSO.
- New AuditProperty table with information about executed actions.
- Additional enhancements and resolved issues.

We appreciate the feedback received from all of our users. Our products would not be what they are today without your continued support. If you have any comments or suggestions, please do not hesitate to [open a HelpDesk case](#) and let us know.

MAPS Updates

MAPS 6.4 is an update to the MAPS service (which includes the eLauncher) and the MAPS Config. You should upgrade both components concurrently.

[Product versions](#)

The latest versions of MAPS included in this release are:

- MAPS service 6.4.0.2212 / MAPS Config 6.4.0.1164 / eLauncher 6.4.0.7

Installation

[1. Prepare test environment and ensure current backup](#)

We highly recommend installing updates in a test environment before applying them to your production environment. You should make sure that a current backup is available in case of any unforeseen issues. To create a full backup of your MAPS environment, go to the **Server -> Backups** screen in MAPS and click **Backup Now**.

[2. Check for updates](#)

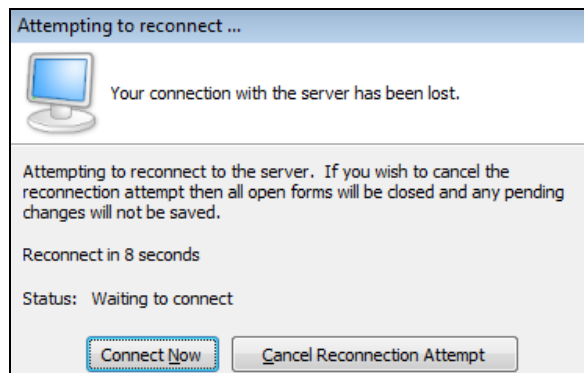
Click the **Check for Updates** button in the MAPS Configuration tool to view available updates.

If you need to apply earlier updates prior to the 6.4 update, please refer to the appropriate [release guide\(s\)](#) before proceeding.

It is possible to apply updates when users are on the system; however, to avoid the possibility of losing unsaved work we recommend applying updates during off hours.

3. Allow update process to complete

When applying updates to the MAPS service you will be temporarily disconnected from the server:



The update process may take a few minutes to complete. **Do NOT cancel the reconnection attempt or manually restart the server.** You will automatically be reconnected to the server once the update has been applied.

4. Verify the latest version is installed

To ensure that you are on the most current version, continue clicking the **Check for Updates** button and applying the updates until no new updates are available.

Please Provide Us with Your Feedback!

As always, we welcome any [feedback or suggestions](#) you may have. We very much appreciate your thoughts and suggestions, so please keep the great ideas coming!

MAPS 6.4 Release Notes

MAPS Service 6.4.0.2212 / MAPS Config 6.4.01164 / eLauncher 6.4.0.7

MAPS

Enhancements

Area	Description	Issue number
Accessibility	The Change Password dialog in the eLauncher is now keyboard and screen reader accessible.	MAPS-1417
Accessibility	Modal dialogs in the eLauncher now have appropriate ARIA roles and labels so that they can be correctly interpreted as dialogs by assistive technology.	MAPS-1420
Accessibility	Added screenreader-only text to the eLauncher login dialog header so that assistive technology can understand the purpose of the dialog.	MAPS-1422
Accessibility	Form fields on the eLauncher login dialog are now programmatically associated with their labels so that screen readers can identify their purpose.	MAPS-1423
Accessibility	Modal dialog titles in the eLauncher now use level-two headings instead of level-three headings, consistent with their role in the application.	MAPS-2360
Data Warehouse	Added an AuditProperty table to the MAPS Auditing database and Data Warehouse. This table stores detailed information about Dashboard.Execute and Report.Execute actions, such as the DataBlock or report path, GUID, Connection_Id, and report type.	MAPS-1484
Data Warehouse	The ScheduleTask table and the ScheduleTaskProperty table now include information for child tasks of bursting tasks.	MAPS-2159
Documentation	Removed Windows Server 2008 (server) and Windows 7 (client) from the list of supported operating systems. MAPS and the MAPS applications still work with these versions; however, any institutions who are still using them should be aware that Microsoft's extended support period is ending in January 2020, and we may therefore be unable to resolve issues relating to these operating system versions should they occur in the future.	MAPS-1940
Product Updater	When applying updates in MAPS, the "Deactivate old versions" option is now checked by default to avoid unintentionally having multiple active product versions.	MAPS-2279
SSO	Added configuration options for CAS servers to allow a logout from MAPS to log the user out and end the CAS SSO session.	MAPS-902
SSO	Added support for AD FS authentication servers for SAML SSO.	MAPS-2357

Resolved Issues

Area	Description	Issue Number
Accessibility	When using a Windows high contrast dark theme and logging in to a product on a server using a self-signed SSL certificate, the notification message about the "untrusted server" was displaying in white text on a white background.	MAPS-2259
Accessibility	Some screen-specific keyboard shortcuts were still functioning even after navigating to a different screen in the MAPS Config.	MAPS-2283

Getting Help

For information on using the software, please refer to the in-product Help, which contains detailed information on all aspects of the product.

If you are having problems with the installation or configuration, you can search our [support site](#), which includes a knowledge base of common issues. If you are unable to find the solution, submit a HelpDesk request with a detailed explanation of the problem you are experiencing.

Please do not hesitate to contact the Evisions HelpDesk if any questions or problems arise. We are here to help you and want to ensure your success.

If you find that areas of this documentation could benefit from additional detail or clarification, please let us know. We are constantly trying to improve the installation process to make it as easy as possible.